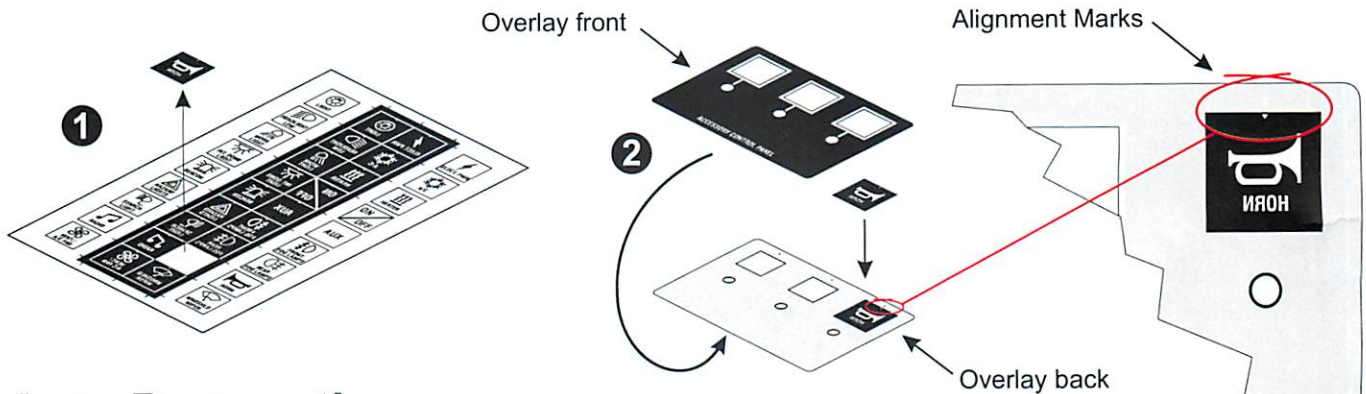


INSTRUCTIONS FOR ASSEMBLY



Area Preparation:

1. Choose desired area to mount the switch panel.
Using the cutting template, cut a thin slot to slide the connector tail through dashboard.
2. Thoroughly clean area from particles, dirt or oil with the alcohol pad included.
3. Clean your hands from any grease or dirt.

Steps for Switch Assembly:

1. Select three symbol-stickers based on the accessories installed in your cart. Peel off symbol-symbol-stickers from legend sheet.
2. Apply the three symbol-stickers to the back of overlay by matching alignment marks and centering inside window.
3. Remove rear paper liner from membrane-switch-assembly. Insert connector tail through previously cut dashboard slot. Affix membrane-switch-assembly by smoothly pressing the edges and center area with fingers.
4. Remove front paper liner from switch assembly. Align and affix overlay with symbol-stickers to switch assembly circuit buttons and green led's. Smoothly press edges and center areas with fingers to help adhesive.
5. Affix/laminate optional decorative frame around switch assembly by peeling adhesive backer.

